



Hard metal for precision tools

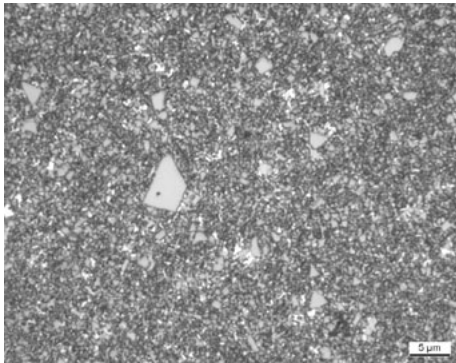
EN

s-line

Composition and properties

Grade	Grain size	Mixed carbide	Binder	Density	Hardness			Transverse rupture strength TRS		K _{IC} * SEVNB
					(%)	g/cm ³	HV10	HV30	HRA	
TUNGSTEN CARBIDE COBALT GRADE										
TMG30	submicron	< 2%	10%	14,40	1590	1570	91,7	3600	522.000	9,3

TMG30 TMG30 is a submicron grade for the ISO application field **K30-K40**. The share of secondary raw materials from the in-house CERATIZIT recycling plant provides a good price-performance ratio for all general cutting tool applications.

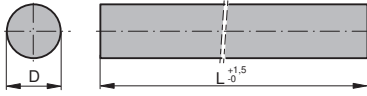


Classification of tungsten carbide grain size	
Tungsten carbide grain size [μm]	Classification
< 0,2	nano
0,2 - 0,5	ultrafine
0,5 - 0,8	submicron
0,8 - 2,5	fine/medium
2,5 - 6,0	coarse
> 6,0	extra-coarse

Comments:

1. The data in this table represents typical material parameters. We reserve the right to modify the data due to technical progress or due to further development within our company.
2. K_{IC}*: the measured critical tension intensity factors (K_{IC}) depend to a high degree on the sample geometry and sample preparation. A direct comparison with parameters which have been determined by means of a different method is therefore not admissible.

Sintered rods



Ø D 2.20 – 34.20 mm

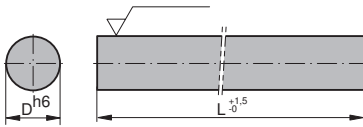
D [mm]	Type, description	VE [pieces]	L [mm]	Dia. tol. [mm]	TMG30	
2.20	RR 0220-330	300	330	-0/+0.20	○	
3.25	RR 0325-330	100	330	-0/+0.10	●	
4.20	RR 0420-330	50	330	-0/+0.20	●	
4.70	RR 0470-330	60	330	-0/+0.20	○	
5.20	RR 0520-330	55	330	-0/+0.25	●	
5.70	RR 0570-330	50	330	-0/+0.25	○	
6.20	RR 0620-330	35	330	-0/+0.25	●	
6.70	RR 0670-330	35	330	-0/+0.25	○	
7.20	RR 0720-330	30	330	-0/+0.30	●	
7.70	RR 0770-330	25	330	-0/+0.30	○	
8.20	RR 0820-330	25	330	-0/+0.30	●	
8.70	RR 0870-330	20	330	-0/+0.30	○	
9.20	RR 0920-330	20	330	-0/+0.30	●	
9.70	RR 0970-330	18	330	-0/+0.30	○	
10.20	RR 1020-330	15	330	-0/+0.30	●	
10.70	RR 1070-330	15	330	-0/+0.30	○	
11.20	RR 1120-330	12	330	-0/+0.30	●	
12.20	RR 1220-330	10	330	-0/+0.30	●	
12.70	RR 1270-330	10	330	-0/+0.30	○	
13.20	RR 1320-330	9	330	-0/+0.30	●	
14.20	RR 1420-330	9	330	-0/+0.30	●	
15.20	RR 1520-330	7	330	-0/+0.30	○	
16.20	RR 1620-330	6	330	-0/+0.45	●	
17.20	RR 1720-330	5	330	-0/+0.45	○	
18.20	RR 1820-330	5	330	-0/+0.45	●	
19.20	RR 1920-330	4	330	-0/+0.45	○	
20.20	RR 2020-330	4	330	-0/+0.45	●	
24.20	RR 2420-330	2	330	-0/+0.55	○	
25.20	RR 2520-330	2	330	-0/+0.65	●	
30.20	RR 3020-330	1	330	-0/+0.65	○	
32.20	RR 3220-330	1	330	-0/+0.65	○	
34.20	RR 3420-330	1	330	-0/+0.65	○	

● = stock item

○ = limited stock or upon request

VE = packaging unit

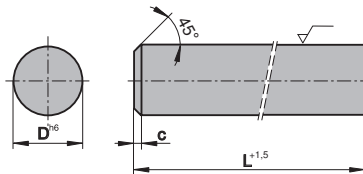
Ground rods • h6



Ø D 3.00 – 32.00 mm

D [mm]	Type, description	VE [pieces]	L [mm]	Dia. tol. [mm]	TMG30		
3.00	RG 0300-330	100	330	+0/-0.006	○		
4.00	RG 0400-330	100	330	+0/-0.008	●		
5.00	RG 0500-330	65	330	+0/-0.008	●		
6.00	RG 0600-330	50	330	+0/-0.008	●		
8.00	RG 0800-330	25	330	+0/-0.009	●		
10.00	RG 1000-330	18	330	+0/-0.009	●		
11.00	RG 1100-330	15	330	+0/-0.011	○		
12.00	RG 1200-330	8	330	+0/-0.011	●		
13.00	RG 1300-330	7	330	+0/-0.011	○		
14.00	RG 1400-330	7	330	+0/-0.011	●		
15.00	RG 1500-330	5	330	+0/-0.011	○		
16.00	RG 1600-330	5	330	+0/-0.011	●		
18.00	RG 1800-330	4	330	+0/-0.011	○		
20.00	RG 2000-330	4	330	+0/-0.013	●		
22.00	RG 2200-330	3	330	+0/-0.013	○		
25.00	RG 2500-330	2	330	+0/-0.013	●		
32.00	RG 3200-330	1	330	+0/-0.016	●		

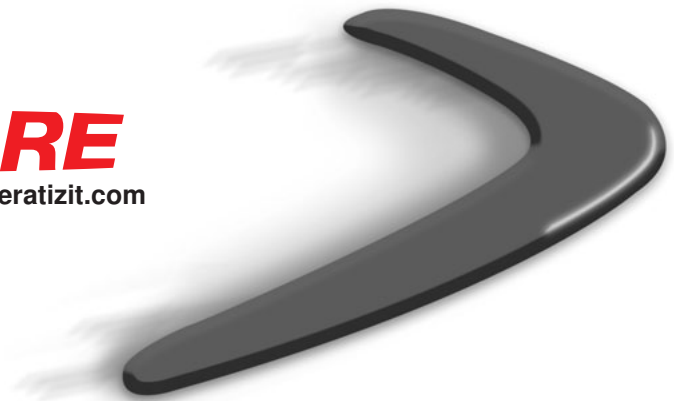
Ground rods • h6



Semi-finished products for solid carbide milling cutters to DIN 6527 K+L
Ø 6.00 – 20.00 mm

D [mm]	Type, description	VE [pieces]	L [mm]	Dia. tol. [mm]	c [mm]	TMG30
6.00	RGDC 0600-051	175	51	+0/-0.008	0.40	●
	RGDC 0600-055	175	55	+0/-0.008	0.40	●
	RGDC 0600-058	175	58	+0/-0.008	0.40	●
8.00	RGDC 0800-059	93	59	+0/-0.009	0.60	●
	RGDC 0800-064	93	64	+0/-0.009	0.60	●
10.00	RGDC 1000-067	60	67	+0/-0.009	0.60	●
	RGDC 1000-073	60	73	+0/-0.009	0.60	●
12.00	RGDC 1200-074	38	74	+0/-0.011	0.80	●
	RGDC 1200-084	38	84	+0/-0.011	0.80	●
14.00	RGDC 1400-084	32	84	+0/-0.011	0.80	●
16.00	RGDC 1600-093	18	93	+0/-0.011	0.80	●
20.00	RGDC 2000-105	9	105	+0/-0.013	1.00	●

● = stock item
○ = limited stock or upon request
VE = packaging unit



SPEED

- > Configure over 900 products online and order immediately
- > Immediate order confirmation
- > Online check regarding delivery status of product
- > Extended product search especially for rods
- > Orders placed by 6 p.m. (C.E.T.) will be dispatched on the same day

INFORMATION

- > On-line availability check for all standard items
- > Up-to-the-minute high-performing CERATIZIT product catalogue including all technical and graphical details
- > Well-structured navigation, easy user guidance

SERVICES

- > Access 24 hours a day
- > Direct link to your personal contact person
- > Online solution - no software installation necessary
- > Optimum safety by means of SSL-encoding and personal access authorization

BUSINESS

- > Order online at individual net prices and conditions
- > Check invoices, consignments and payments
- > 'Last-minute' changes of open orders possible
- > Usage of personal order templates possible
- > Shipment tracking via Internet (Track & Trace)



563

www.ceratizit.com - just a click.



s-line



7090022
MA-PRO-0563-EN-03/12-SR

We reserve the right to make technical changes for improvement of the product.